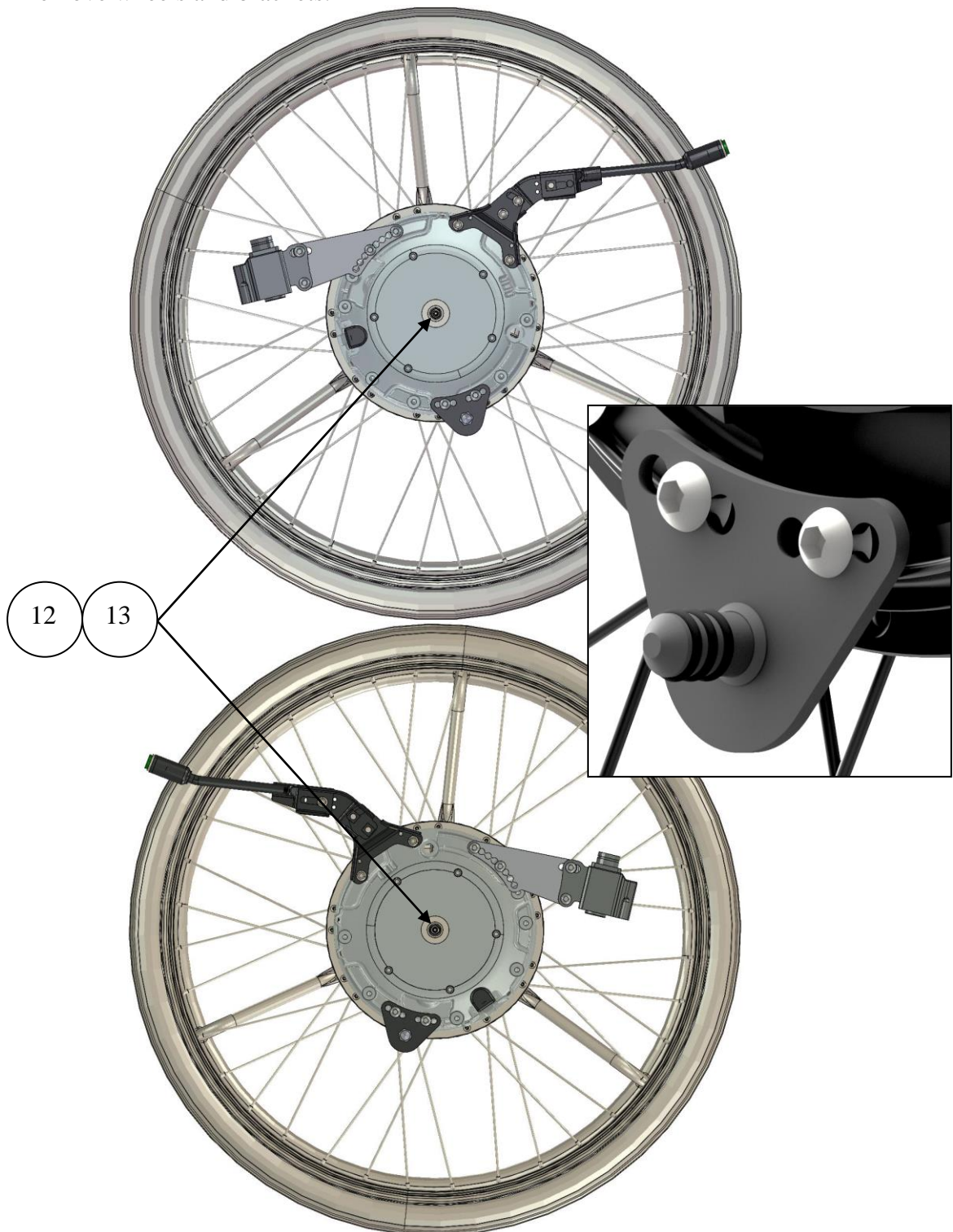


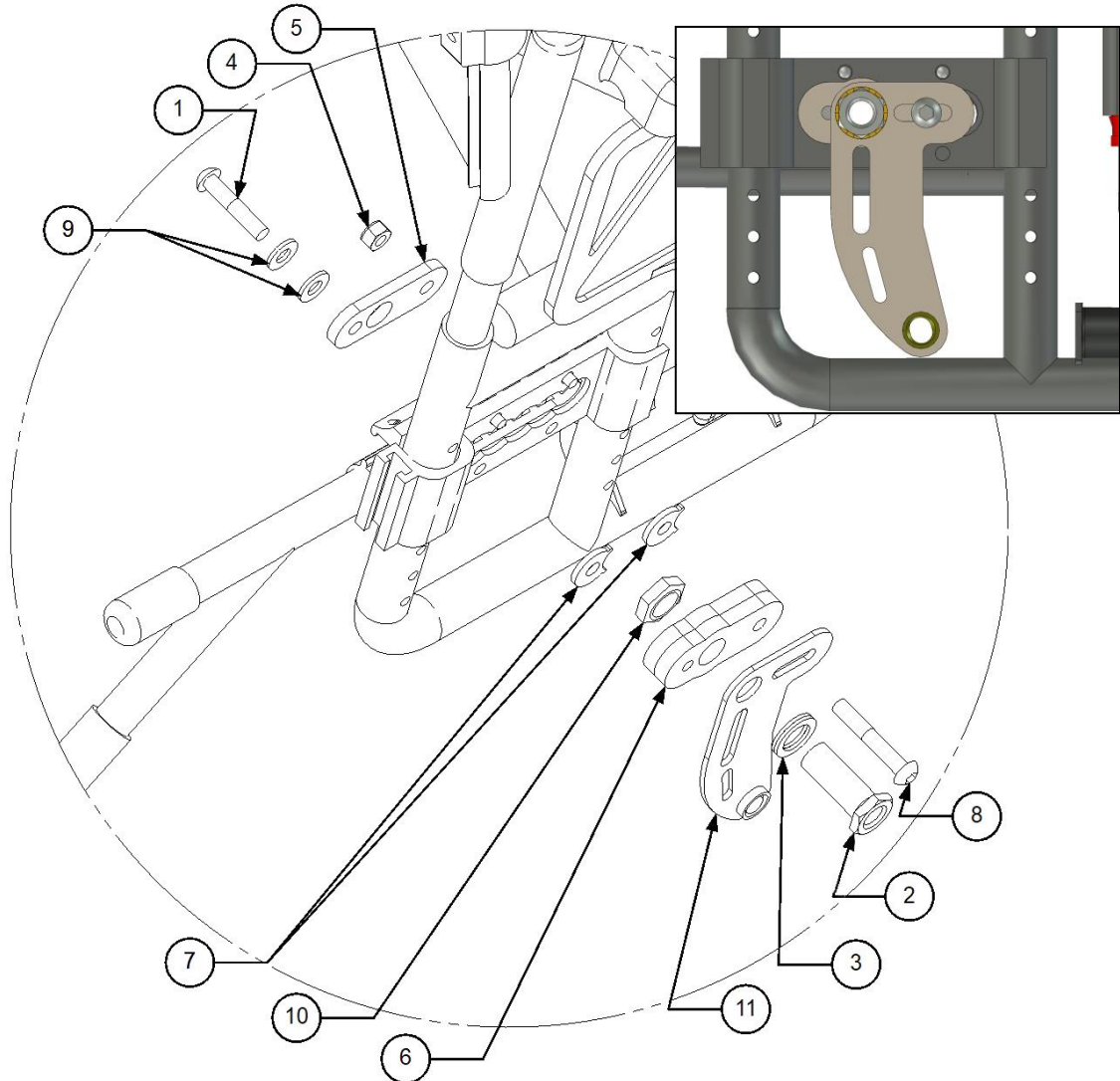
# decon wheel

Assembly instructions for Legend 2/ Emineo/ Exigo 30 with Onetool Block  
MEM6057P and MEM6058P

1. Remove wheels and brackets.



2. Check the correct placement for the eMove, and that it is axle  $\text{Ø}12,0 \times 51$  with Part Number: XOE-2530E-BO and Spacer with Part Number: XOE-25383-00. Stop pin with Part Number: 320003.



3. Assemble the plate (right side) according to pictures

Parts for right side mounting:

| Item No. | Part Number  | Qty | Description         |
|----------|--------------|-----|---------------------|
| 1        | XSM8X40      | 1   | Screw Round M8 x 40 |
| 2        | HW063        | 1   | Hub sleeve          |
| 3        | 405239       | 1   | Nordlock Washer     |
| 4        | XSM8ML       | 1   | Locknut M8          |
| 5        | MEM6057-01   | 1   | Bracket part1       |
| 6        | MEM6057-02   | 1   | Bracket assy part2  |
| 7        | MEM6057-05   | 2   | Center spacer       |
| 8        | XSM8X50      | 1   | Screw Round M8 x 50 |
| 9        | XSM8BR       | 2   | Washer Plain M8     |
| 10       | XSM16M       | 1   | Nut M16X1 Low       |
| 11       | 310022       | 1   | Bracket             |
| 12       | XOE-25383-00 | 1   | Spacer              |
| 13       | 93440-120520 | 1   | SRA Circlip 6821    |

**Note!** If you only order the mounting set, the axle, axle spacer and the circlip **are not included**, for replacement see the service manual.

4. Assemble the back placed battery bag.