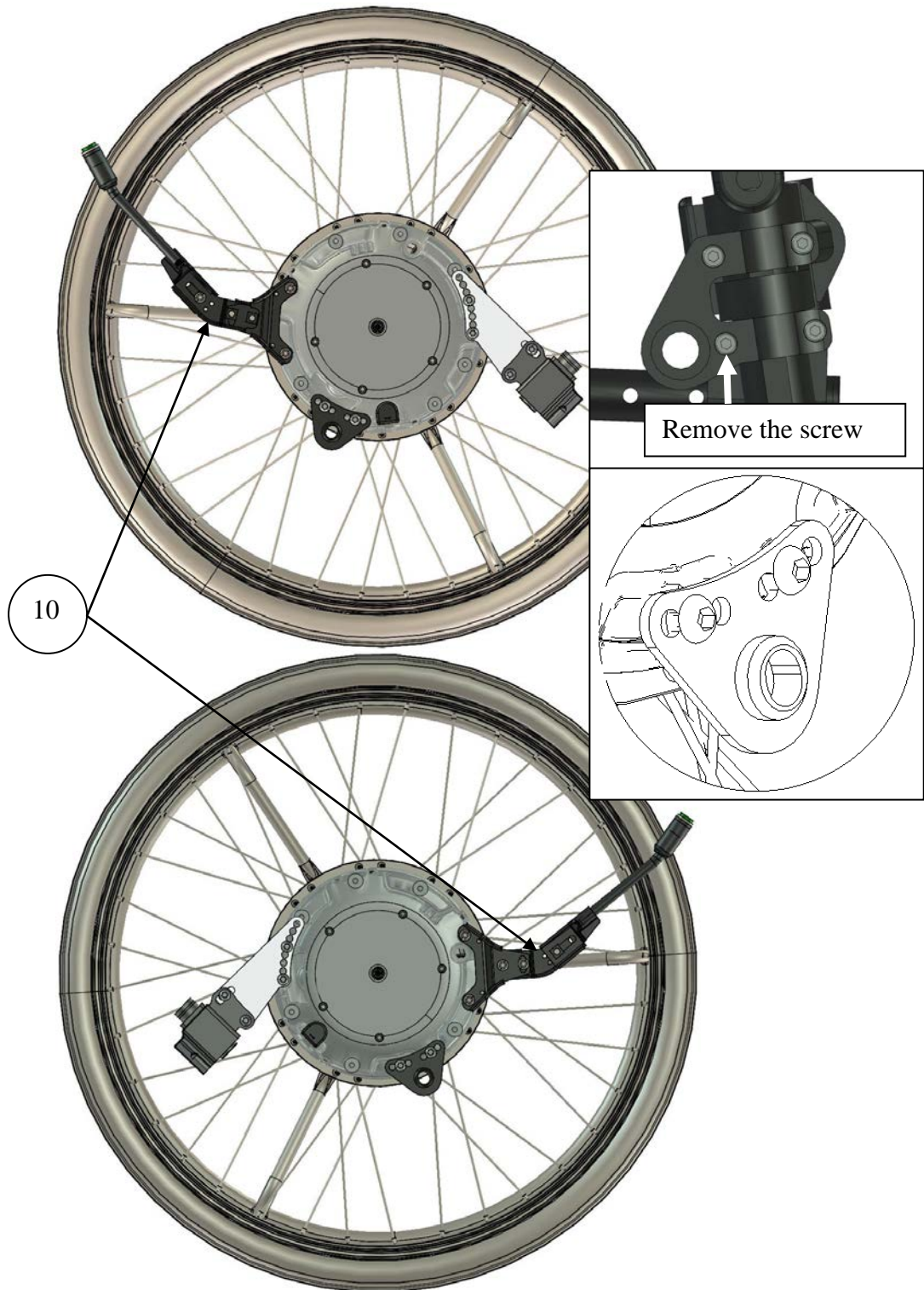
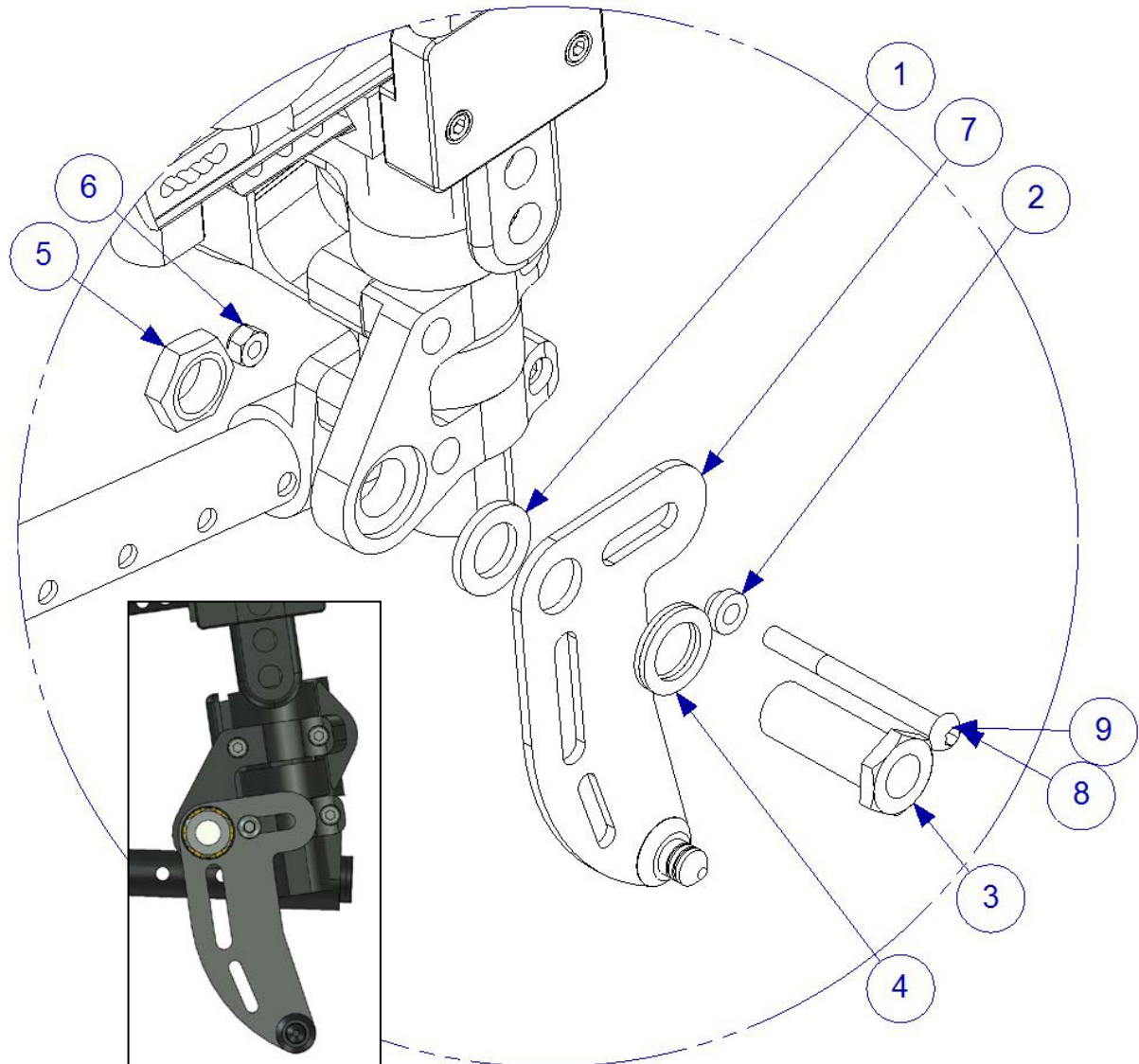


## Assembly instructions for KÜschall Champion 2015- MEM6313 and MEM6314

1. Remove wheel and hub sleeve on both sides.



2. Check the correct placement for the eMove with axle  $\varnothing 12,7 \times 46$  with  
Part number: XOE-2530E-00



3. Assembly of the plate (right side) according to pictures.

4. Parts for right side mounting:

Item No.	Part Number	Qty	Description
1	100 400 082	1	Spacer
2	100 400 020	1	Spacer
3	HW069	1	Sleeve M16x1/12,7
4	405239	1	Nordlock Washer M16
5	XSM16M	1	Nut M16X1 Low
6	XSM6ML	1	Nut Self-Locking M6 (only with 8)
7	XOE-22294-BO	1	Right Bracket
8	K6SM6X65	1	Screw Round M6 x 65 full threaded
9	K6SM6X45	1	Screw Round M6 x 45 full threaded
10	XOE-46383-10	1	Bracket

**Note!** If you only order the mounting set, the axle **is not included**, for replacement see the service manual.

5. Assemble the back placed battery bag.

**Note!** If you want to use original wheels you need to change the axle to QR1271.