

VH3040-90

Assembly for Panthera with carbon rearaxle.

1. Replace the old Standard rear axle. Order it from Panthera.

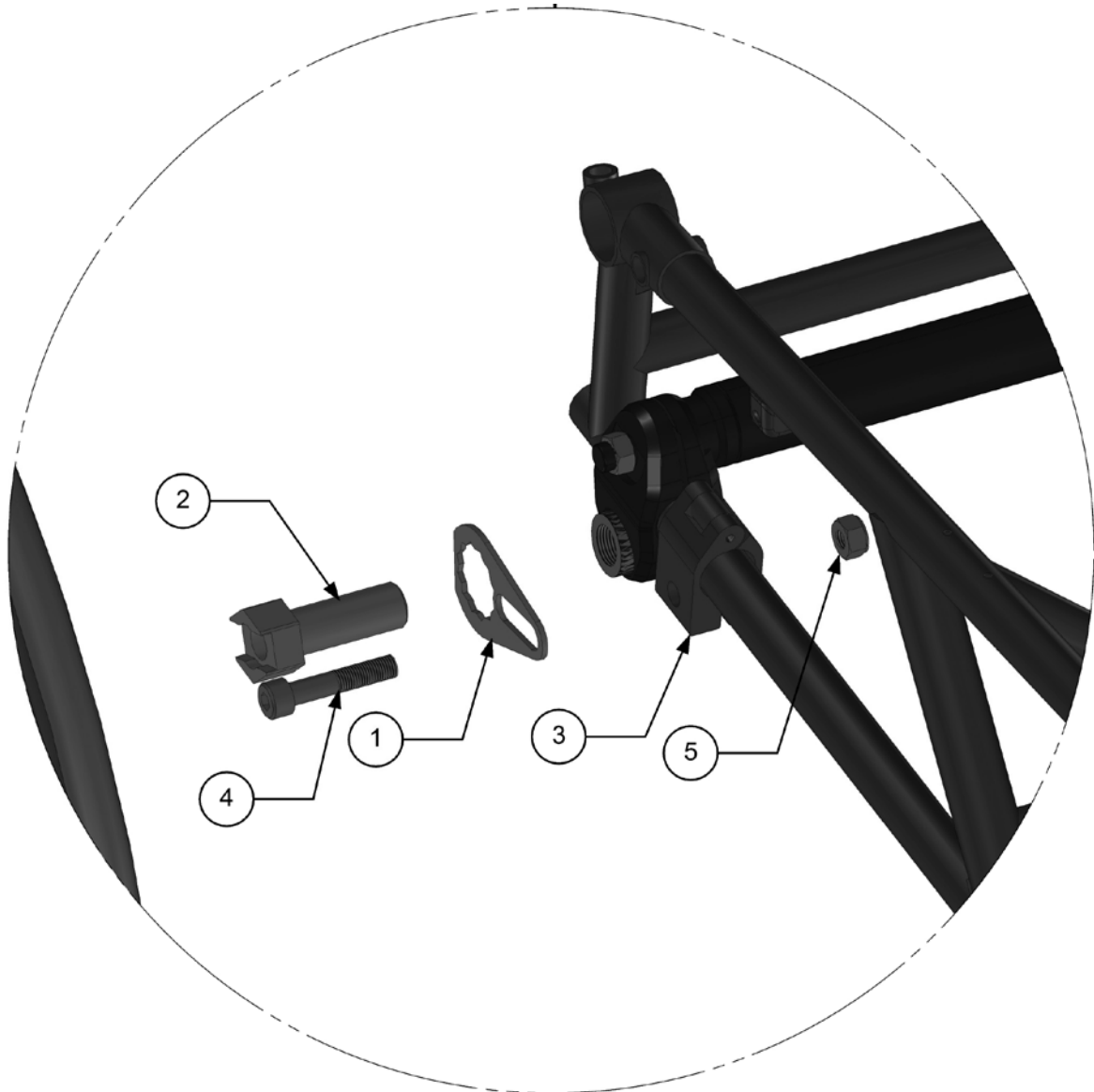


Rear Axle old STANDARD fit for:

S2 / S3	YES / YES
S2 kort / S3 kort	YES / YES
S2 kort-låg / S3 kort-låg	YES / YES
S2 large / S3 large	YES / YES
S2 swing / S3 swing	YES / YES
S2 swing-kort / S3 swing-kort	YES / YES
U2 / U3	YES / YES
U2 light / U3 light	NO / NO
Bambino	YES
Micro	NO
Panthera X	NO

Description	Part Nb:
Rear axle Complete seatwide 24	3300024
Rear axle Complete seatwide 27	3300027
Rear axle Complete seatwide 30	3300030
Rear axle Complete seatwide 33	3300033
Rear axle Complete seatwide 36	3300036
Rear axle Complete seatwide 39	3300039
Rear axle Complete seatwide 42	3300042
Rear axle Complete seatwide 45	3300045
Rear axle Complete seatwide 50	3300050

2. Assemble the rear axle onto the wheelchair.
3. Assemble the bracket for the EasyWheel.



5	XSM8ML	1	Lock Nut M8
4	XSM8X40	1	Screw M8 x 40
3	290010	1	Clamp
2	VH51001-04	1	Sleeve
1	VH52002-04	1	Lock Plate
Item	Part Nb.	Qty	Description