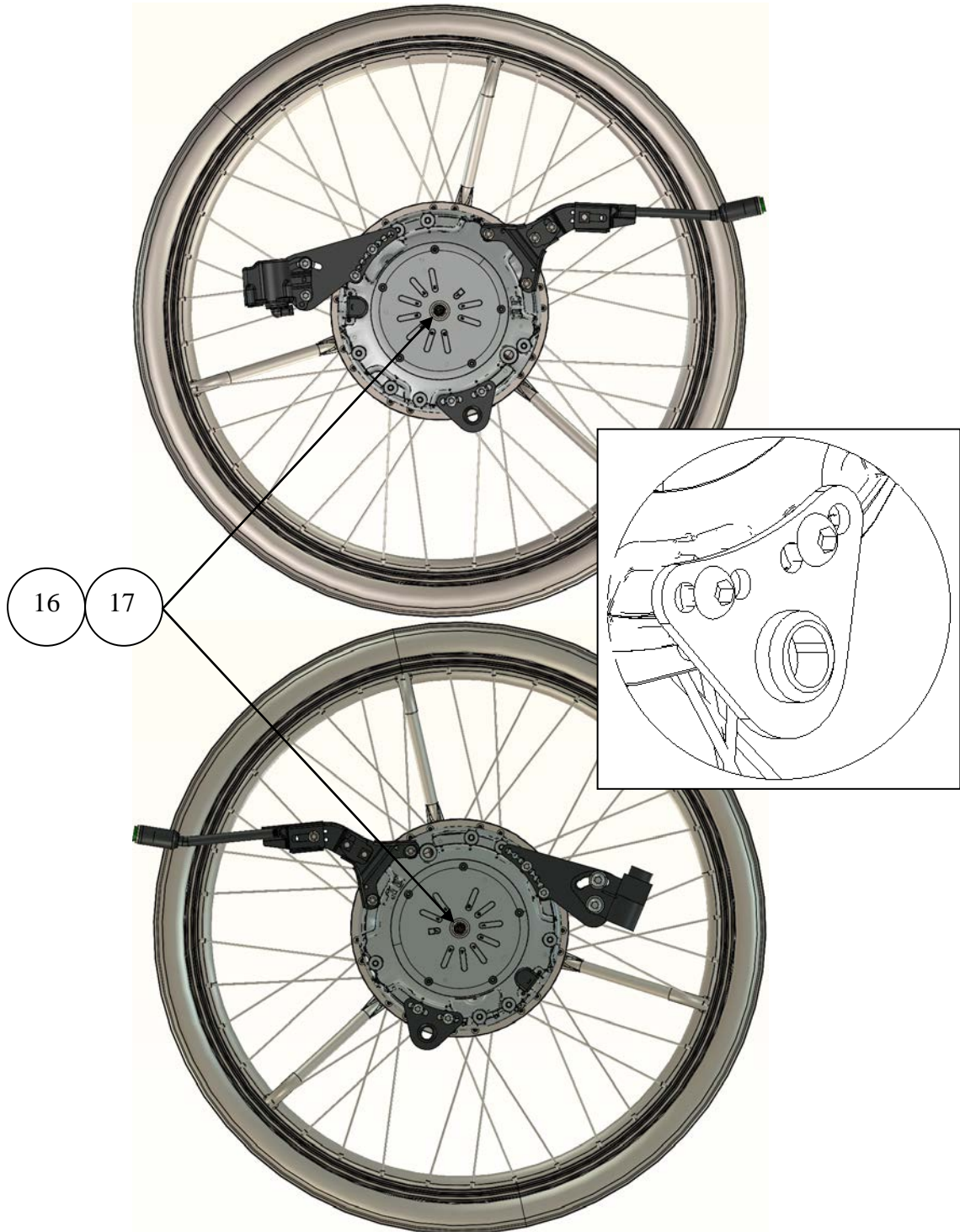
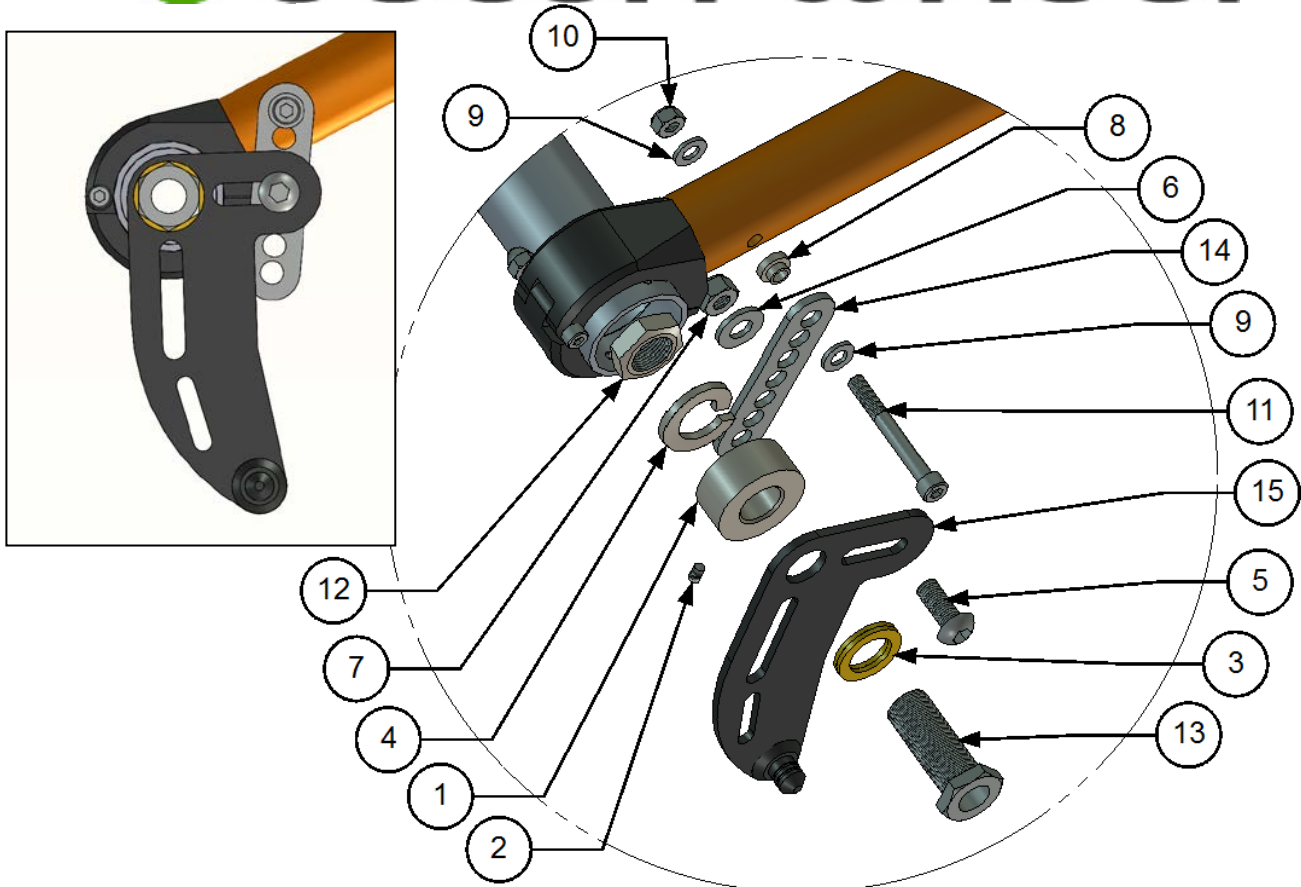


Assembly instructions for Küschall K3, K4 with Vario-Ax rear wheel axle MEM6073 and MEM6074

1. Remove wheel and hub sleeve on both sides.



2. Check the correct placement for the eMove with axle $\varnothing 12,7 \times 51$ with
Part number: XOE-2530E-C0 and Spacers with Part number: XOC-25383-00

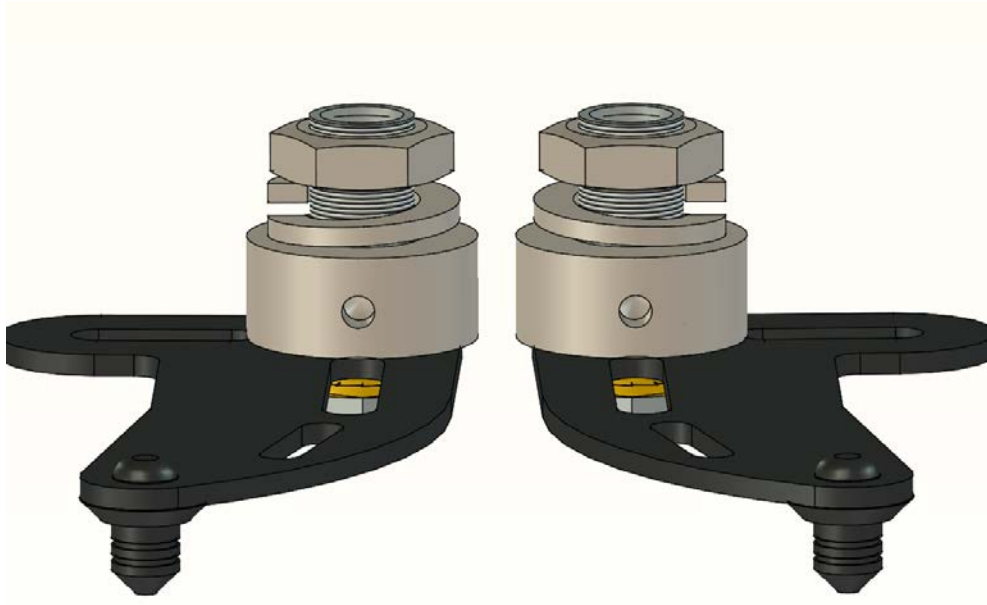


3. Assembly of the plate (right side) according to pictures.

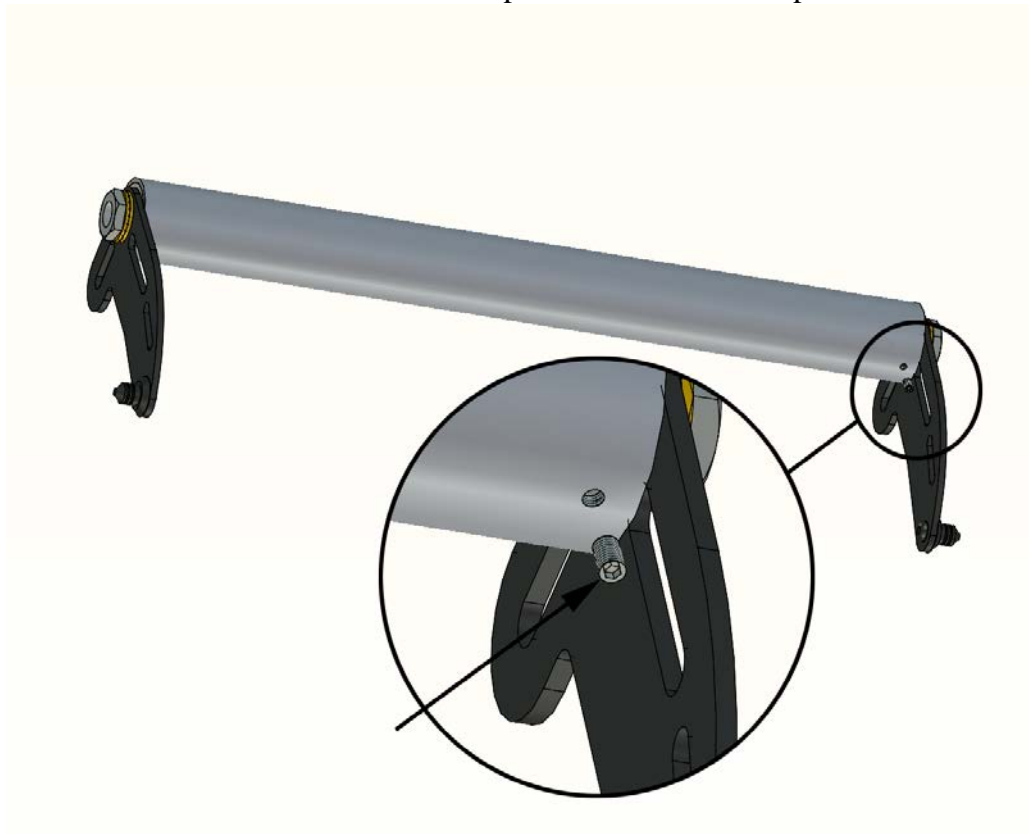
Parts for right side mounting:

Item No.	Part Number	Qty	Description
1	300018	1	Spacer
2	Screw : No Head - M4,0 x 8,0	1	Screw : No Head - M4,0 x 8,0
3	405239	1	Nordlock Washer
4	XSM16FJ	1	Single Coil Washer M16
5	XSM8X20	1	Screw M8x20
6	XSM8BR	1	Plain Washer M8
7	XSM8ML	1	Lock nut M8
8	100 400 020	1	Spacer
9	XSM6BR	2	Plain Washer M6
10	XSM6ML	1	Nut : Self-Locking - M6
11	XSM6X50	1	Screw M6x50
12	XSM16M	1	Nut M16X1 Low
13	HW069	1	Hubsleever M16x1/12,7
14	300020	1	Bracket
15	XOE-22294-BO	1	Right Bracket
16	XOC-25383-00	1	Spacer 12,7
17	93440-120520	1	Circlip

Note! If you only order the mounting set, the axle, axle spacer and the circlip **are not included**, for replacement see the service manual.



4. Begin with assemble the Left and the Right bracket according to the picture above.
Note that the little hole in the Spacer 300018 must be placed downwards.



5. Assemble the rear axle tube with the brackets and lock it in position with the stop screws M4x8.
6. Now you reassemble the rear axle tube onto the wheelchair and mount the last bracket.
7. Assemble the back placed battery bag.