



Assembly Instructions

LBM7013, LBM7113, LBM7213

Liberty Mounting set Etac Cross 6 / Cross 6 Long

1. Safety

Symbols



Risk of serious injury or death.

An operation that, if not correctly performed, may lead to injury to the operator or others.



Risk of material damage.

An operation that, if not correctly performed, may lead to material damage.



Particularly important or explanatory information

General instructions

These instructions shall always be followed when placing the mounting set LBM7013, LBM7113, LBM7213 Mounting set Etac Cross 6 / Cross 6 Long on a wheelchair.

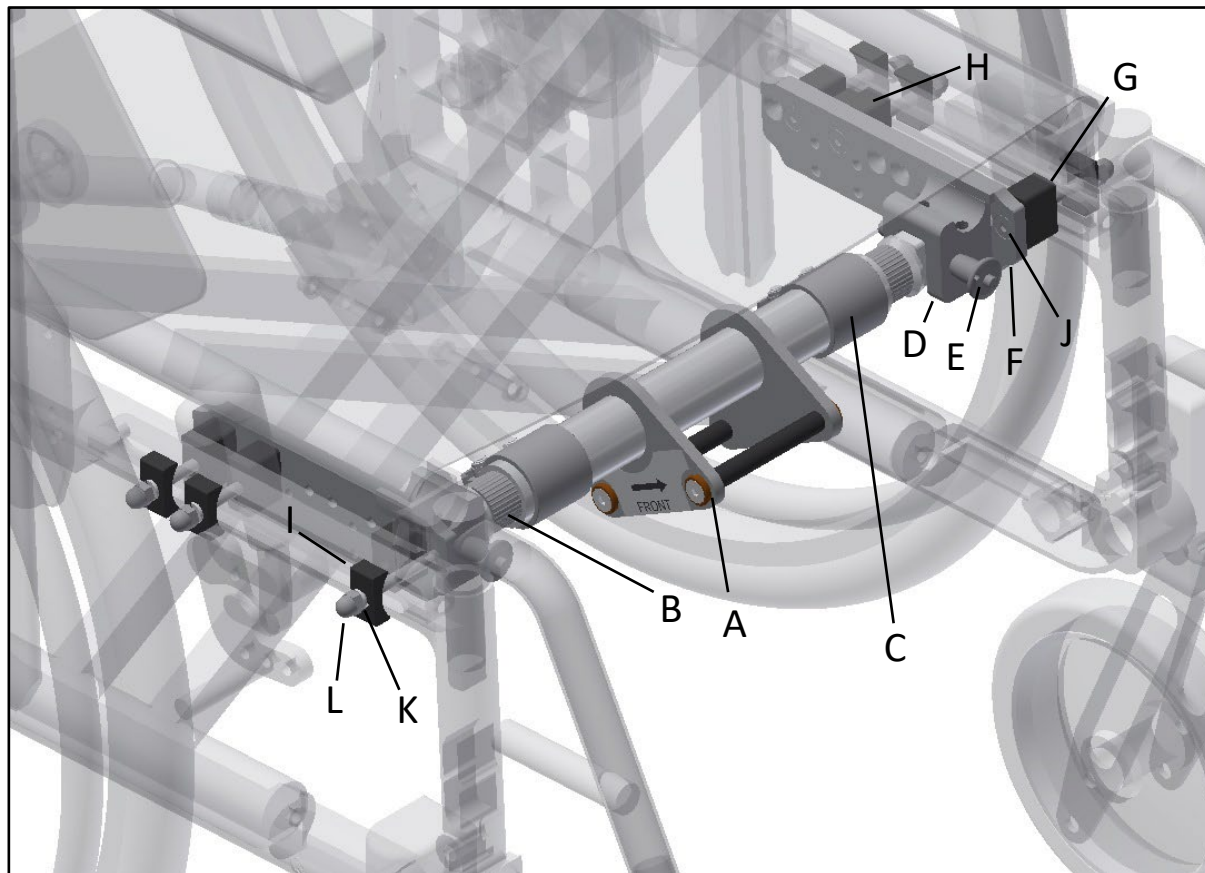
To be able to connect Liberty to the wheelchair Liberty also needs to be adjusted according to the assembly instructions that is included in the delivery of Liberty.

Warnings



Assembly work or changes made to the mounting set must be carried out by trained service technician, reseller or another person assigned by Decon.

2. Overview

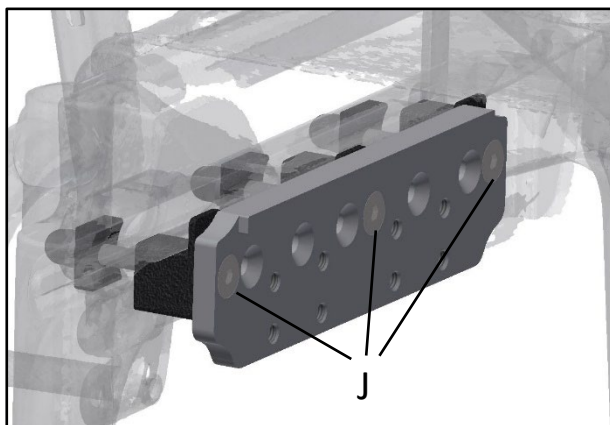


<i>Item number</i>	<i>Qty.</i>	<i>Description</i>
A	1	Center pipe
B	2	Outer pipe
C	2	Clamp
D	2	Holder adapter bar
E	2	QR-Pin
F	2	Adapter plate
G	4	Spacer adapter plate front
H	4	Spacer adapter plate rear
I	6	Washer adapter plate
J	6	Screw M6x55 countersunk
K	6	Spring washer M6
L	6	Dome nut M6
M	4	Screw M6x14 countersunk

3. Assembly and adjustment of adaptor

First mount the adapter plate (F), spacer adapter plate (G & H), washer adapter plate (I). The kit includes 2 of each type of distance adapter plates/side, front and rear type. This is to enable the correct placement of the adapters (F). Use a total of 3 pcs/side.

This is kept into place using screws (J) that is tightened on the outside of the frame using spring washer (K) and domed nut (L).



Tighten the domed nut (L) loosely at this point so that the complete assembly can be moved along the frame of the wheelchair.

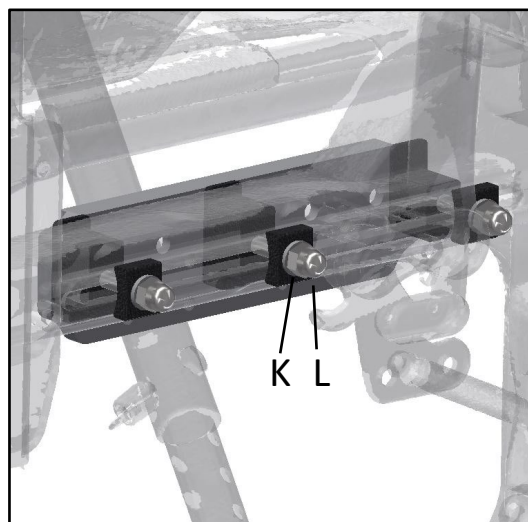
Now mount the adapter bar (D) bracket in the adapter plate (F) using the screws (M).

Assemble both sides.



WARNING!

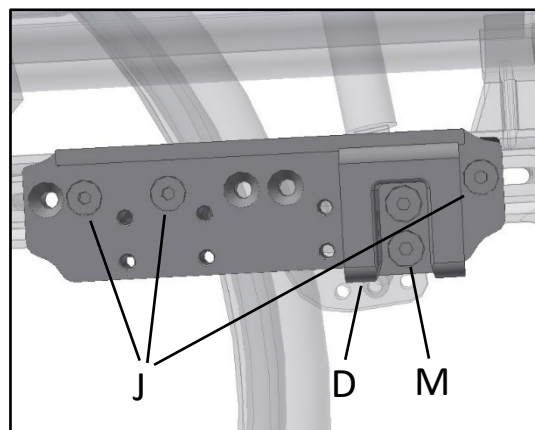
When assembly on wheelchair one support point must always be in front of the wheelchairs brake.



INFO

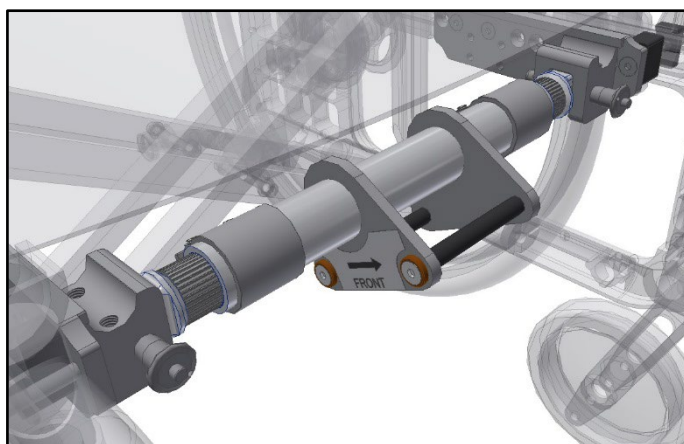
The position of the wheelchair's rear wheels can affect the position of the screws (J) and holder adapter bar (D). The positioning of the assembly that pictures are showing can vary depending on the position of the rear wheels of the wheelchair.

On the Cross 6 Long version it is most likely that all the screws (J) will be positioned in front of the wheelchair's brakes.



Now mount the complete adapter bar that consists of center pipe (A), outer pipe (B) and clamp (C). The complete adapter bar is mounted into the holders (D) by using the QR-pins (E).

Make sure the ends of the outer pipe (B) are parallel otherwise it can be hard to assemble it into the holders (D). It shall be possible to move the center pipe sideways and also rotate it if correctly assembled.



Now tighten all the screws (J) that holds the adapter plate in place.

INFO

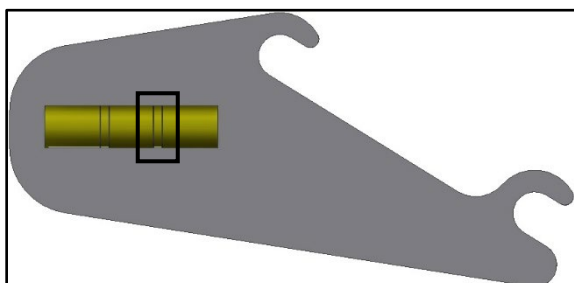
Check that the arrow on the labeling mounted on the center pipe (A) is pointing towards the front of the wheelchair. If the center pipe (A) is mounted the wrong way around it will not be possible to attach Liberty to the bar.



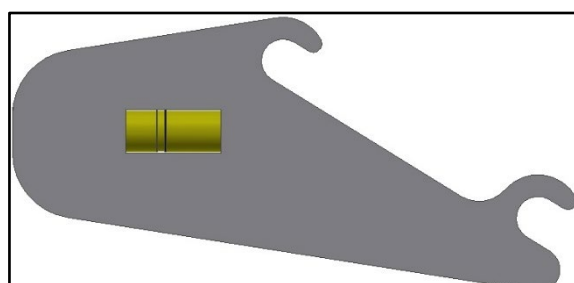


There are two types of assembly tools. The old version where the complete spirit level is shown and one new version where the front part of the spirit level is hidden. When using the old version make sure that the bubble in the spirit level sits on the lines of the back part of the spirit level (marked on the pictures bellow with a rectangle). Since the adapter bar now have splines inside it will not be possible to get the bubble of the spirit level exactly right. Just choose the most correct position.

Old version



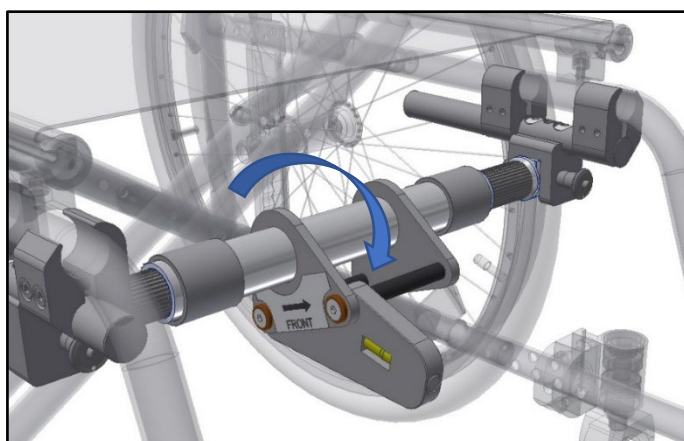
New version



Adjustment of the angle can be done in two different manners. Both is described bellow.

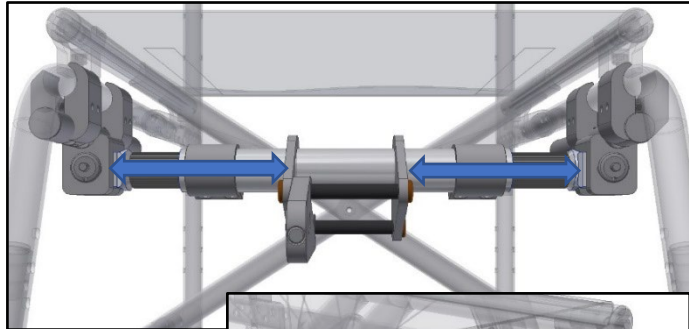
Alt.1

Using the adjustment tool that is included in the delivery of Liberty (not this mounting set), set the angle of the adaptorbar so that the spirit level is in level. Inside the pipes there are splines so when rotating you will feel and hear a clicking. When desired angle have been accomplished, check that the center pipe is centered in the wheelchair. Now tighten the screws in the clamps (C).

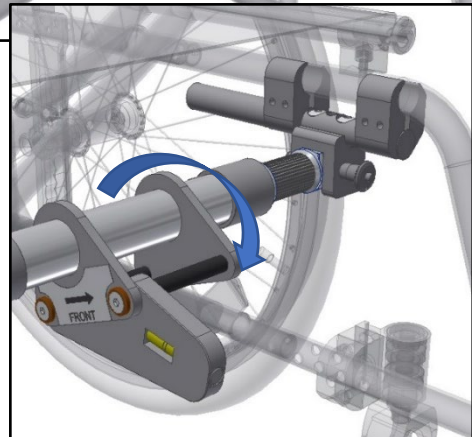


**WARNING!**

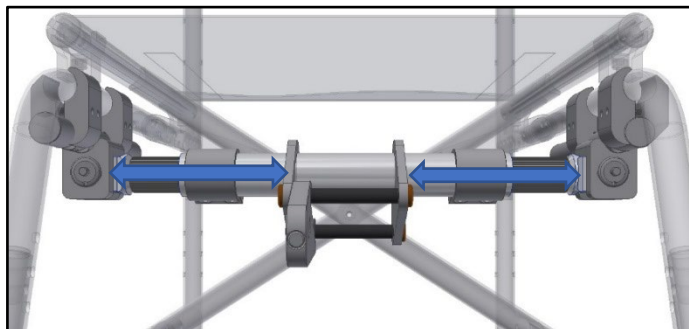
The screws holding the clamps (C) shall be tightened to 7-9Nm of torque.

**Alt.2**

Using the adjustment tool that is included in the delivery of Liberty (not this mounting set), set the angle of the adaptorbar. Only mount the inner pipe on one side and then rotate the center pipe to the correct angle. Now mount the other inner pipe in the same position/angle as the first one. Check that the center pipe is centered in the wheelchair. Now tighten the screws in the clamps (C).

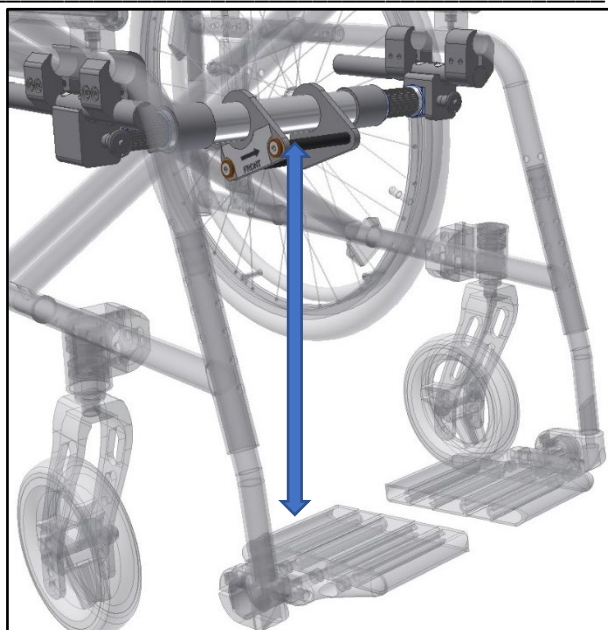
**WARNING!**

The screws holding the clamps (C) shall be tightened to 7-9Nm of torque.



With a measuring tape the height between the ground and the upper docking pin of the adapter bar is measured. This will be used later when assembling Liberty.

Now read the assembly instructions that was included in the delivery of the Liberty unit. Assemble and adjust the Liberty according to the instruction.



Don't forget to reassemble the brakes of the wheelchair in case these were removed when mounting the adaptor. Also, if the seat cloth was loosened during mounting of the adaptor don't forget to reassemble this.

Decon Wheel AB
Södra Ekeryd 119, SE-314 93 Hyltebruk, Sweden
Tel: +46 (0)345 40880
Fax: +46 (0)345 40895
E-mail: info@decon.se

