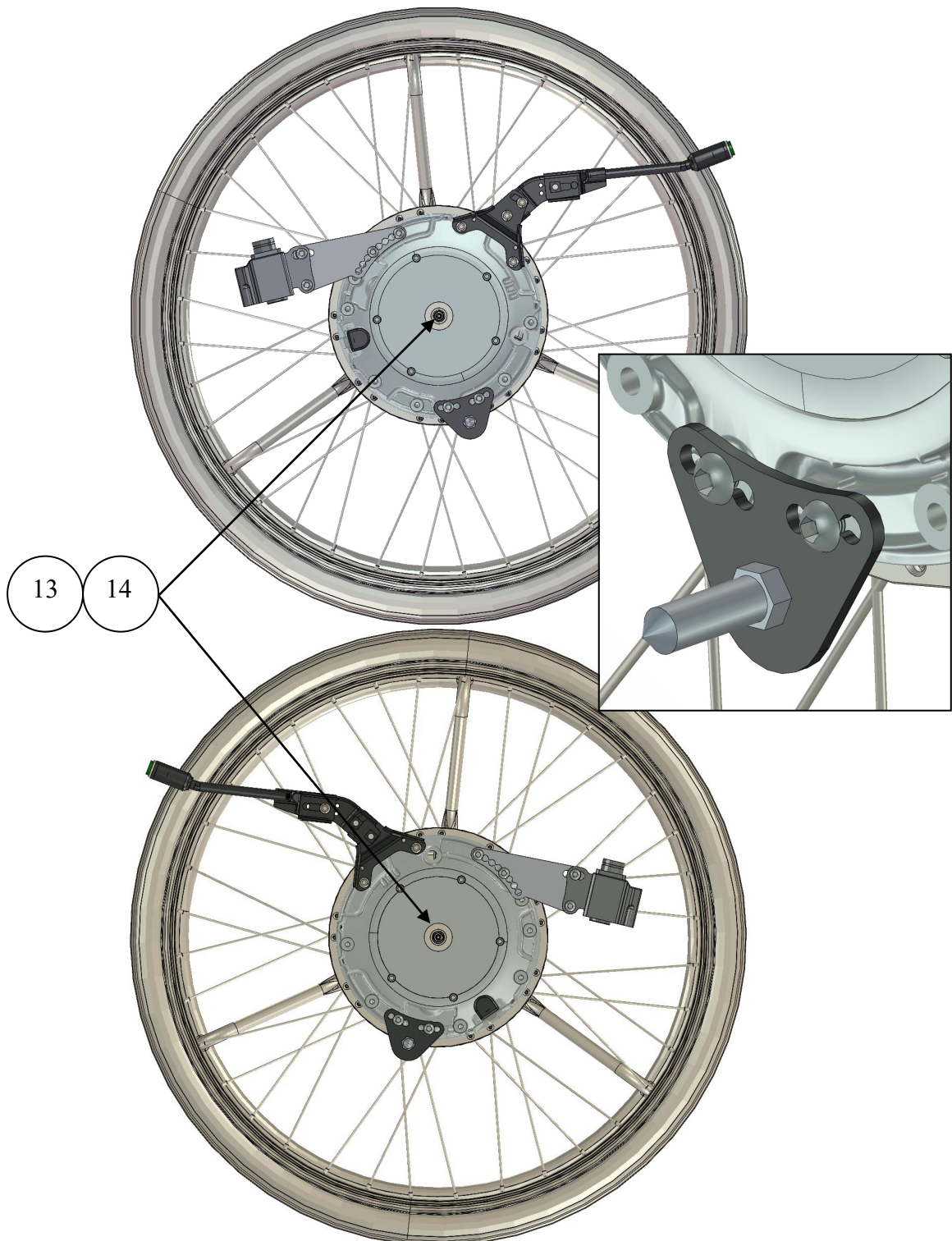
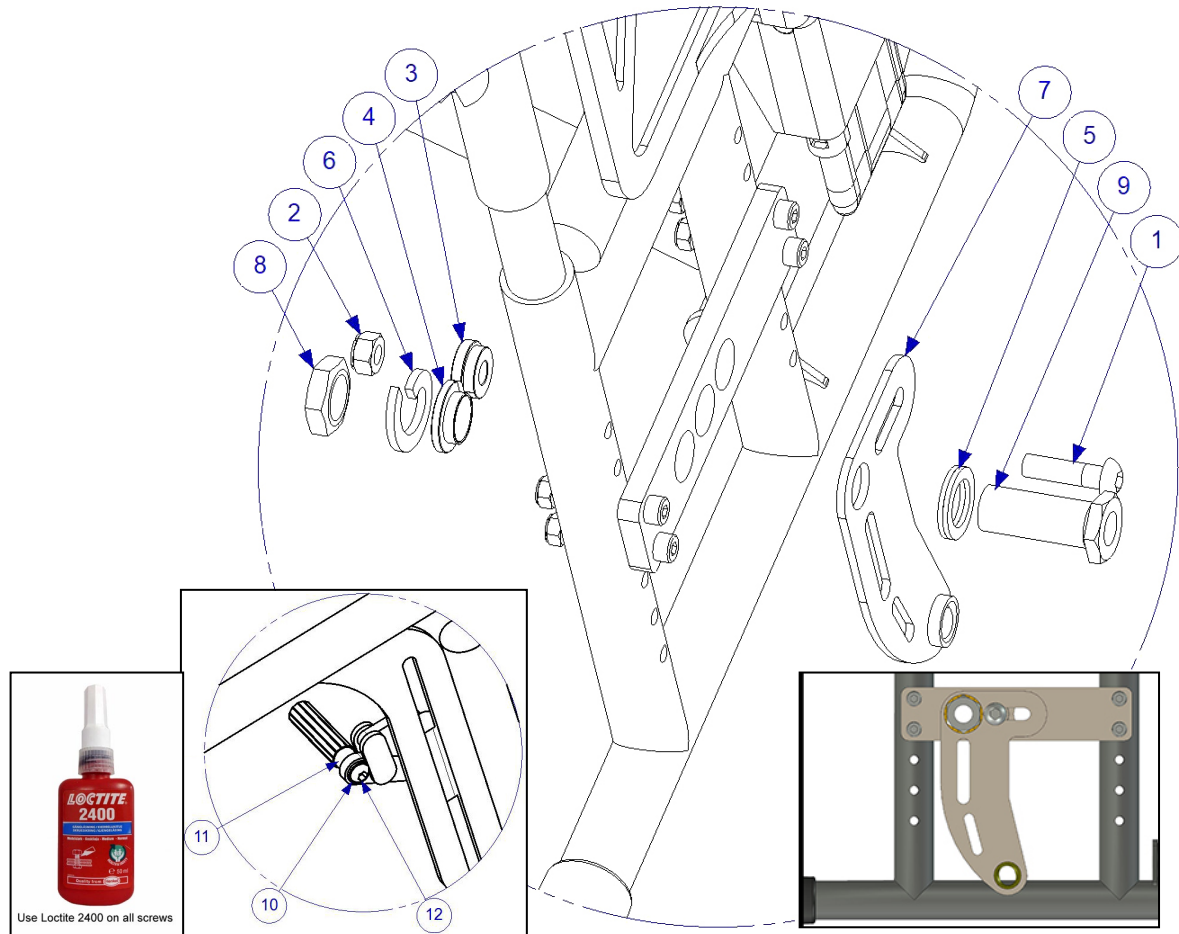


## Assembly instructions for Exigo 20, Legend 2 Exigo MEM6163P and MEM6164P

1. Remove wheel and hub sleeve on both sides.



2. Check the correct placement for the eMove with axle  $\text{Ø}12,0 \times 51$  with Part number: XOE-2530E-B0 and Spacers with Part number: XOE-25383-00 and Stop pins are assembled with Part Numbers: 290000, 300001 and XSM8ML.



3. Assembly of the plate (right side) and the brake extender according to pictures.

Parts for right side mounting:

Item No.	Part Number	Qty	Description
1	XSM8X30	1	Screw Round M8 x 30
2	XSM8ML	1	Nut Self-Locking M8
3	100 400 041	1	Spacer
4	100 400 042	1	Spacer
5	405239	1	Nordlock Washer M16
6	XSM16FJ	1	Single Coil Washer M16
7	310022	1	Bracket
8	XSM16M	1	Nut M16X1 Low
9	HW063	1	Sleeve
10	XSM6BR	1	Plain Washer M6
11	100 400 039	1	Spacer
12	XSM6X30	1	Screw Round M6 x 30
13	XOE-25383-00	1	Spacer 12,0
14	93440-120520	1	Circlip

**Note!** If you only order the mounting set, the axle, axle spacer and the circlip **are not included**, for replacement see the service manual

4. Assemble the back placed battery bag.